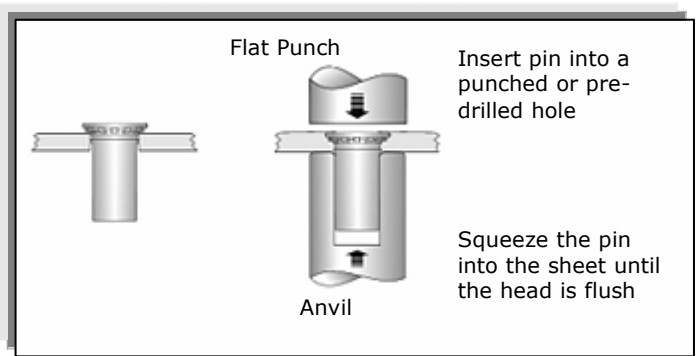
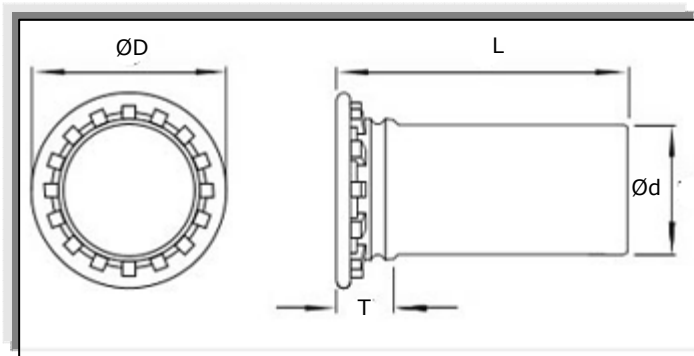




Cambridge *Engineering* Services Ltd

Tel 01767 699766 Fax 01767 692058



Data sheet for Metric Self-Clinching Flush Head Pins

Pin Dia Ød	Min Sheet Thickness	T Max	ØD +/- 0.4	Hole Size +0.08 -0.00	Min hole distance center to sheet edge
3mm	1.00	2.30	5.30	3.50	6.40
4mm	1.00	2.30	6.00	4.10	7.10
5mm	1.00	2.55	7.50	5.50	7.60

Pin Lengths	Pin Dia	Length (L) + / - 0.4										
	3mm	6	8	10	12	15	18	20	-	-	-	-
4mm	6	8	10	12	15	18	20	22	25	-	-	
5mm	-	8	10	12	15	18	20	22	25	30	35	

Finishes

Bright Zinc / Clear Passivate, Zinc / Yellow Chromate Passivation to order

Material

Carbon Steel, 300 series Stainless Steel (A2), Aluminium (to order)

Material hardness limitations for Self-Clinching Flush Head Pin

Steel Clinch Studs : 80HRB, 300 Series Stainless Steel Clinch Studs: 70HRB, Aluminium Clinch Studs : 50HRB
Stainless Steel parts will not normally install successfully into Stainless Steel sheet.

Data sheet for Self-Clinching Flush Head Pins

